



**Advance Pro**

Introducing the latest model in Prestige Medical's first-class range of Advance autoclaves - Advance Pro.

Advance Pro is a Class B sterilizer available in 16 or 22 litre capacity units, they offer superior performance and all units are fully supported by Prestige Medical's award-winning customer service and technical service support.

Advance Pro provides Class B vacuum and Class N non-vacuum cycles in the same unit, with a host of new features to help simplify and streamline the day to day sterilization of re-usable medical instruments.

## Advance Pro

Reliable and cost-effective, the Advance Pro's outstanding performance comes from having over 25 years of high quality autoclave design experience.

### COOL TECH

The latest in compact high performance cooling, CoolTech allows the Advance Pro to achieve even faster cycle times than the previous Advance models.

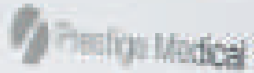
### Flexi Rack

For maximum flexibility, FlexiRack can accommodate up to 20 different tray configurations and can be adapted to accept a wide range of loads. Improved drying performance is provided by the autoclave's HTS (Heat Transfer System), designed to take full advantage of the high performance thermal conductivity properties of aluminium.

### VSI

Advance Pro also comes with a six colour indicator light system giving immediate cycle status and operator peace of mind, together with a selection of water feed and drain options to best meet your needs.

The clear, backlit LCD display with simple user friendly 6 push button control system ensures safe and correct operation.



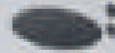
### Specification

### Class B Vacuum

Chamber Capacity (litres)	16	22
Max instrument length (mm)	320	450
Width (mm)	480	480
Height (mm)	410	410
Depth (mm)	480	610
Max net weight (kg)	39.5	43.5
Chamber diameter (mm)	250	250
Chamber length (mm)	340 max	470 max
Max Load Weight kg:		
Solid unwrapped	6	8
Wrapped	2	2
Porous	1	1
Operating Pressure (minimum)	2.05 bar (gauge)	2.05 bar (gauge)
Voltage/Wattage	230V/2200W	230V/2200W
Frequency	50Hz – 60Hz	50Hz – 60Hz

Advance 

STANDBY MODE  
Press standby for 10  
to READY MODE and  
enable door access.



## Features

Unique FlexiRack tray and load management system

Robust integral stainless steel waste water tank and a high performance cooling system for faster cycle times

16 & 22 litre chamber capacities available

Multiple water feed and drain options

Clear, backlit LCD display with simple user friendly 6 push button control system

VSI (Visual System Indicator). Six cycle stage indicator lights

New easy fit door seal

Supplied as standard with an integrated data logger and SD memory card

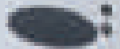




Advance Pro

1:30  
100°C

- Power button
- Back button
- Cancel button
- Start/Pause button
- Function button 1
- Function button 2



Cycle	Load	Min Sterilizing Temp °C	Sterilizing Time (Mins)	Cycle Time (Mins) 16ltr	Cycle Time (Mins) 22ltr	Drying
Standard (Type B)	Porous loads, wrapped, pouched, solid or hollow instruments	134	3.5	39	47	✓
Standard (Type B)	Porous loads, wrapped, pouched, solid or hollow instruments	121	16	51	59	✓
Prion cycle	Porous loads, wrapped, pouched, solid or hollow instruments	134	18	54	62	✓
Test Pack/ Quick B Cycle	Steam penetration test	134	3.5	27	35	-
Sensitive (Type N)	Unwrapped solid instruments	121	16	28	29	✓ (optional)
Standard (Type N)	Unwrapped solid instruments	134	3.5	17	19	✓ (optional)

Note: All cycles were conducted utilising a 2 kg load. The cycle time will change depending on the load type, quantity & weight



## Compliant to international standards and guidelines

- 93/42/EEC Medical Device Directive (MDD)
- 97/23/EEC Pressure Equipment Directive (PED)
- 2012/19/EU Waste Electrical and Electronic Equipment (WEEE)
- BS EN 13060:2014 Small steam sterilizers
- BS EN 61010-1:2010 Safety requirements for electrical equipment for measurement, control, and laboratory use
- BS EN 61010-2-040:2015 Safety requirements for electrical equipment for measurement, control, and laboratory use
- BS EN 61326-1:2013 Electrical equipment for measurement, control and laboratory use. EMC requirements
- HTM 01-05
- ISO 13485:2016
- Restriction of Certain Hazardous Substances in Electrical and Electronic Equipment Directive under 2011/65/EU
- EN ISO 14971:2012 Risk management for Medical Devices



FlexiRack® Design Reg No 6003493

Advance Pro

STANDBY MODE  
Press standby to go  
to READY MODE and  
enable door access.





**000 «Диаэм»**

**Москва**

**ул. Магаданская, д. 7, к. 3 ■ тел./факс: (495) 745-0508 ■ sales@dia-m.ru**

**www.dia-m.ru**

**С.-Петербург**

+7 (812) 372-6040  
spb@dia-m.ru

**Казань**

+7 (843) 210-2080  
kazan@dia-m.ru

**Новосибирск**

+7 (383) 328-0048  
nsk@dia-m.ru

**Ростов-на-Дону**

+7 (863) 303-5500  
rnd@dia-m.ru

**Воронеж**

+7 (473) 232-4412  
vrn@dia-m.ru

**Екатеринбург**

+7 (912) 658-7606  
ekb@dia-m.ru

**Йошкар-Ола**

+7 (927) 880-3676  
nba@dia-m.ru

**Кемерово**

+7 (923) 158-6753  
kemerovo@dia-m.ru

**Красноярск**

+7 (923) 303-0152  
krsk@dia-m.ru

**Армения**

+7 (094) 01-0173  
armenia@dia-m.ru

